

4.6 Enteral Nutrition (Other): Probiotics

Question: Does the addition of probiotics to enteral feeding result in better outcomes in critically ill patients?

Summary of evidence: There were 5 level 1 and 28 level 2 studies that were reviewed. Of the 33 included trials, 22 enrolled heterogeneous critically ill (medical and surgical) ICU patients (Tempe 1983, Heimbürger 1994, Bleichner 1997, Kecskes 2003, Jain 2004, Klarin 2005, McNaught 2005, Alberda 2007, Forestier 2008, Klarin 2008, Knight 2008, Barraud 2010, Morrow 2010, Frohmader 2010, Ferrie 2011, Lopez de Toro 2014, Sanaie 2014, Rongrungruang 2015, Zeng 2016, Malik 2016, de Castro Soares 2017 and Shariatpanahi 2018), 6 enrolled patients with acute pancreatitis (Li 2007, Oláh 2007, Besselink 2008, Sharma 2011, Cui 2013, Wang 2013), 1 enrolled trauma patients (Kotzampassi 2006), 2 enrolled head injury patients (Tan 2011 and Wan 2019) and 2 enrolled burn patients (Schlotterer 1987, Lu 2004). Three trials studied the effects of the addition of *saccharomyces boulardii* to enteral nutrition, four studied the effects of *Lactobacillus plantarum*, three studied the effects of *Lactobacillus rhamnosus*, one studied *Lactobacillus casei*, three studied the effects of VSL #3, one studied the effects of Trevis™ (combination of probiotics+ prebiotics), four studied the effects of Synbiotic 2000 (combination of probiotics and prebiotics), one studied Ecologic 641 (probiotics) plus prebiotics (Besselink 2008), one studied Biovicerin (sporulated *B. cereus*), and twelve studies used probiotics of varying strains. One study compared a kitchen made formula made with honey (as a prebiotic contains oligosaccharides or bifidogenic factor) to one without (Shariatpanahi 2018), hence the data from this trial was not included in the meta-analyses. Bleichner 1997 and de Castro Soares 2017 only reported on diarrhea while the other studies reported on clinical outcomes. In most of the studies, patients received either enteral or parenteral nutrition, but no further details were provided.

Mortality: When the data from the 25 trials that reported on 28 day, 1 month, hospital or ICU mortality were aggregated, probiotics were associated with a trend towards a reduction in overall mortality (RR 0.88, 95% CI 0.73, 1.07, $p=0.20$, test for heterogeneity $I^2=23\%$; figure 1). Probiotics had no effect on hospital mortality when the data from 18 trials were pooled (RR 1.01, 95% CI 0.84, 1.21, $p=0.92$, heterogeneity $I^2=0\%$; figure 2) and no effect on ICU mortality pooling results from 8 trials (RR 0.90, 95% CI 0.70, 1.17, $p=0.44$, heterogeneity $I^2=0\%$; figure 3).

Overall infections and VAP: Infectious outcome data were reported in 20 trials and the pooled results show that probiotics were associated with a significant reduction in infectious complications (RR 0.80, 95% CI 0.70, 0.91, $p=0.0007$, test for heterogeneity $I^2=26\%$; figure 4). When the data from the 9 trials reporting VAP were pooled, probiotics were associated with a trend towards a decrease in the incidence of VAP (RR 0.80, 95% CI 0.64, 1.00; $p=0.05$, heterogeneity $I^2=41\%$; figure 5).

Subgroup analyses: Several subgroup analyses were done to elucidate the effects of probiotics on overall infections (see figure 6). The details are as follows:

Dose of probiotics: Subgroup analyses showed a trend towards a reduction in overall infections in trials using high dose probiotics ($\geq 5 \times 10^9$ CFU/day) (RR 0.87, 95% CI 0.75, 1.02, $p = 0.09$, test for heterogeneity $I^2=26\%$) and a significant reduction in the trials using a lower dose ($< 5 \times 10^9$ CFU/day) (RR 0.69, 95% CI 0.58, 0.83, $p < 0.0001$; test for heterogeneity $I^2=0\%$), p -value for the difference between groups: $p=0.05$).

***Lactobacillus plantarum*:** Subgroup analyses showed that *L. plantarum*, either alone or in combination with other probiotics, was associated with a significant reduction in overall infections (RR 0.71, 95% CI 0.58, 0.86, $p=0.0007$, test for heterogeneity $I^2=0\%$). A significant reduction in overall infections was also seen in the trials that did not include *L. plantarum* (RR 0.84, 95% CI 0.72, 0.98, $p=0.03$, test for heterogeneity $I^2=32\%$). The test for subgroup differences was $p=0.18$.

***Lactobacillus rhamnosus* GG:** Subgroup analyses showed that effect of trials using LGG was not significantly different from trials that did not include LGG (RR 0.76, 95% CI 0.53, 1.11, $p=0.15$ compared to RR 0.80, 95% CI 0.69, 0.93, $p=0.003$, test for difference between subgroups: $p=0.80$).

Higher mortality: The median mortality rate (28 day or hospital mortality or ICU mortality if 28 day/hospital not reported) in the control groups of all studies was 19%. Subgroup analyses showed that probiotics were associated with a significant reduction in overall infections among patients with higher risk of death ($>19\%$ mortality in the control group) (RR 0.77, 95% CI 0.65, 0.92, $p=0.004$). There was no significant effect in overall infections observed for trials of patients with a lower mortality ($\leq 19\%$ mortality) in the control group (RR 0.88, 95% CI 0.69, 1.11, $p=0.27$) and the test of subgroup differences was not significant ($p=0.67$).

Methodological score: The median method score was 9. We compared trials with a methods score of less than 9 with those with a score of 9 or more. Trials with a higher score showed a significant reduction in overall infections (RR 0.80, 95% CI 0.65, 0.99, $p=0.04$) as did trials with a lower methods score (RR 0.76, 95% CI 0.65, 0.88, $p=0.0003$). There were no significant differences between the subgroups ($p=0.64$).

Length of Stay: Probiotics had no impact on hospital LOS when data from 13 trials were pooled (WMD -0.63, 95% CI -3.61, 2.36, $p=0.68$, test for heterogeneity $I^2=74\%$; figure 7). There was a trend towards a decrease in ICU LOS when results of 15 trials were pooled (WMD -3.39, 95% CI -7.49, -0.71, $p=0.11$, test for heterogeneity $I^2=93\%$; figure 8).

Other: The impact on diarrhea, reported variably as days of diarrhea, diarrhea rates and/or duration of diarrhea was reported in 15 trials. Pooling results from 9 trials that reported patients who developed diarrhea, probiotics had no effect (RR 0.96, 95% CI 0.82, 1.13, $p=0.62$; heterogeneity $I^2=3\%$; figure 9). Data were too sparse to aggregate other reported individual infections (see table 1).

Conclusions:

- 1) The addition of probiotics to enteral nutrition has no effect on overall, hospital or ICU mortality.
- 2) The addition of probiotics to enteral nutrition is associated with a reduction in overall infectious complications.
- 3) Probiotic supplementation may be associated with a reduction in the incidence of VAP.
- 4) The addition of probiotics to enteral nutrition has no effect on hospital LOS but may be associated with a reduction in ICU LOS.
- 5) The addition of probiotics to enteral nutrition has no effect on diarrhea

Level 1 study: *if all of the following are fulfilled: concealed randomization, blinded outcome adjudication and an intention to treat analysis.*

Level 2 study: *If any one of the above characteristics are unfulfilled*

Table 1. Randomized studies evaluating Probiotics in critically ill patients

	Study	Population	Methods Score	Type of Probiotic/Intervention		
				Delivery Vehicle	Intervention/Dose/Duration	Control
1	Tempe 1983	ICU patients N=40	C.Random: yes ITT: yes Blinding: double Score: 10 Viability (intervention): NR	EN tube	EN (unknown) + Ultra-Levure (<i>Saccharomyces boulardii</i>), 10 ¹⁰ /1L solution for 11-21 days	EN (unknown) + Placebo (sterile solution)
2	Schlotterer 1987	Burn patients N=18	C.Random: no ITT: no Blinding: double Score: 8 Viability (intervention): NR	NG tube	EN (Polydiet or Nutrigil) + <i>Saccharomyces boulardii</i> 500 mg QID for 8-28 days	EN (Polydiet or Nutrigil) + Placebo
3	Heimburger 1994	Mixed ICU patients 83% received antibiotics N=62	C.Random: no ITT: no Blinding: double Score: 9 Viability (intervention): NR	EN tube	EN (standard) + 1g of Lactinex (<i>Lactobacillus acidophilus</i> & <i>Lactobacillus bulgaricus</i>) 10 ⁸ live cells TID for 5-10 days	EN (standard) + placebo (0.5g dextrose + 0.5g lactose)
4	Bleichner 1997	Mixed ICU patients N=128	C.Random: not sure ITT: yes Blinding: double Score: 13 Viability (intervention): NR	EN tube	EN (unknown) + <i>Saccharomyces boulardii</i> 500 mg QID for 21 days or until EN stopped	EN (unknown) + Placebo (powder)
5	Kecskes 2003	ICU patients on antibiotics N=45	C.Random: no ITT: no Blinding: double Score: 8 Viability (intervention): yes	NJ tube	EN (Nutrison fibre) + fermented oatmeal formula with <i>Lactobacillus plantarum</i> 299 10 ⁹ BID and fibre for 7 days	EN (Nutrison fibre) + heat killed <i>Lactobacillus plantarum</i> 299 BID + fibre (non-viable)
6	Jain 2004	ICU patients N=90	C.Random: no ITT: yes Blinding: double Score: 10 Viability (intervention): NR	Oral or NG tube	EN or PN + Trevis™ 1 capsule TID + 7.5g Raftilose (oligofructose) BID until hospital discharge	EN or PN + Placebo (powdered sucrose capsules)

7	Lu 2004	Burn patients N=40	C.Random: no ITT: yes Blinding: double Score: 9 Viability (intervention): NR	NR	EN + synbiotics Medipharm (Sweden) (1×10^{10} each: <i>Pediococcus pentosaceus</i> , <i>Leuconostoc mesenteroides</i> , <i>Lactobacillus paracasei</i> , <i>Lactobacillus plantarum</i> + 2.5 g each: beta-glucan, inulin, pectin, stabilizing starch for 21 days	EN + prebiotics only (2.5 g each: beta-glucan, inulin, pectin, stabilizing starch)
8	Klarin 2005	Critically ill patients on antibiotics N=17	C.Random: no ITT: no Blinding: no Score: 6 Viability (intervention): NR	Mixed in fermented oatmeal, given via NG tube	EN + <i>Lactobacillus plantarum</i> 299v, 10^9 /day 50ml every 6 hours x 3 days then 25 ml every 6 hours until ICU discharge	EN (Impact or Nutrodrip Fibre). Some patients needed PN
9	McNaught 2005	ICU patients on antibiotics N=130	C.Random: no ITT: yes Blinding: no Score: 7 Viability (intervention): NR	Oral, NJ tube	EN or PN + Proviva, (oatmeal & fruit drink) 5 x 10^7 CFU/ml of <i>L. plantarum</i> 299v X 500 mls until hospital discharge or beyond	EN or PN alone
10	Kotzampassi 2006	Multiple trauma patients from 5 ICUs N=77	C.Random: no ITT: no Blinding: double Score: 8 Viability (intervention): NR VAP determination: clinical	Endoscopic gastrostomy or NG tube	EN or PN + Synbiotic 2000 Forte 10^{11} , 1 sachet/day for 15 days until ICU discharge	EN or PN + Placebo (Maltodextrin), mixed in tap water
11	Alberda 2007	ICU patients N=28	C.Random: no ITT: yes; Blinding: double Score: 10 Viability (intervention): No for VSL # 3; Yes for bacteria sonicates	NG tube	Jevity Plus (EN) (10 g fructooligosaccharides/1000 mL and 12 g of soluble and insoluble fiber blend) + VSL # 3, 1 package BID, 9×10^{11} /day for 7 days until ICU discharge or EN discontinuation	Jevity Plus + Placebo
12	Li 2007	Severe acute pancreatitis patients N=25	C.Random: no ITT: yes Blinding: no Score: 7 Viability (intervention): NR	Given enterally	Jinshuangqi (1 capsule is 0.5 g, consist of 0.5×10^7 CFU <i>Bifidobacterium longum</i> , 0.5×10^6 <i>Lactobacillus bulgaricus</i> and 0.5×10^6 <i>Streptococcus thermophilus</i>) 2.0 g TID on basis of traditional treatment Duration: NR	Traditional treatment

13	Oláh 2007	Severe acute pancreatitis patients N=83	C.Random: no ITT: no Blinding: no Score: 9 Viability (intervention): NR	NJ tube	EN (Nutricion Fibre) + Synbiotic 2000, 4 X 10 ¹⁰ CFU for 7 days	EN (Nutricion Fibre) + 10g plant fibres ((2.5 g each of Betaglucan, Inulin, Pectin & Resistant starch) (Prebiotics) BID for at least 2 days
14	Forestier 2008	Mixed ICU patients, 50% on antibiotics N=208	C.Random: not sure ITT: no Blinding: double Score: 8 Viability (intervention): NR VAP determination: objective	NG tube or Oral (after tube removal)	<i>Lactobacillus casei rhamnosum</i> , 10 ⁹ CFU BID until ICU discharge	Placebo (growth medium never exposed to bacteria).
15	Besselink 2008	Acute pancreatitis patients from 15 ICUs N=298	C.Random: not sure ITT: yes Blinding: double Score: 11 Viability (intervention): NR VAP determination: clinical	NJ tube or Oral	EN (Nutrison Multifibre) + Ecologic 641 10 ¹⁰ CFU BID for 28 days	EN (Nutrison Multifibre) + Placebo (cornstarch + maltodextrins)
16	Klarin 2008	ICU patients from 5 ICUs, on antibiotics for c. Difficile N=68	C.Random: yes ITT: no Blinding: double Score: 10 Viability (intervention): NR	Mixed in fermented oatmeal added to enteral feeds NG tube	299 <i>Lactobacillus plantarum</i> , 8 x 10 ⁸ CFU/ml given as 6 x 100 ml doses every 12h & after 50 ml given BID until ICU discharge	Same oatmeal gruel mixed with lactic acid
17	Knight 2009	General ICU patients N=300	C.Random: yes ITT: no Blinding: double Score: 10 Viability (intervention): NR VAP determination: clinical	NJ or OG (orogastric) tube	EN (Nutrition Energy) + Synbiotic 2000 FORTE 4 x 10 ¹¹ species/sachet BID for 28 days or ICU discharge	EN (Nutrison Energy) + Placebo
18	Barraud 2010	Mechanically ventilated ICU patients, 80% on antibiotics N=167	C.Random: yes ITT: yes; Blinding: double Score: 12 Viability (intervention): NR VAP determination: objective	NG tube	EN (Fresubin) + Ergyphilus 2 x 10 ¹⁰ per capsule/day + potato starch 5 caps/day for 28 days	EN (fresubin) + Placebo capsules (excipient of potato starch)

19	Morrow 2010	ICU patients N=146	C.Random: no; ITT: yes; Blinding: double; Score:10 Viability (intervention): yes VAP determination: objective	Oropharynx and NG tube	EN (routine care) + <i>Lactobacillus rhamnosus</i> GG, 2X10 ⁹ BID as lubricant and mixed with water until extubation	EN (routine care) + inert plant starch inulin (prebiotic) BID as lubricant and mixed with water
20	Frohman 2010	General ICU patients on antibiotics N=45	C.Random: yes ITT: yes Blinding: double Score: 11 Viability (intervention): yes	NG or NJ tube	EN (Standard) + VSL #3 mixed in nutritional supplement (Sustagen), BID until hospital discharge	EN (Standard) + placebo mixed in nutritional supplement (Sustagen), BID
21	Ferrie 2011	Critically ill patients with diarrhea, N=36	C.Random: no ITT: yes Blinding: double Score: 10 Viability (intervention): yes	NG tube	EN (Standard) + Culturelle (<i>Lactobacillus rhamnosus</i> GG), 10 ¹⁰ species/capsule + 280 mg inulin powder for 7 days	EN (Standard) + Raftiline, gelatin capsule with 280 mg inulin powder (prebiotic)
22	Sharma 2011	Acute pancreatitis patients N=50	C.Random: yes ITT: yes Blinding: double Score:11 Viability (intervention): yes	Oral, NJ or NG	EN (standard) or oral 4 sachets each 2.5 X 10 ⁹ <i>Lactobacillus acidophilus</i> , <i>Bifidobacterium longus</i> , <i>Bifidobacterium bifidum</i> & <i>Bifidobacterium infantalis</i> + 25 gms fructose for 7 days	EN (Standard) + placebo
23	Tan 2011	Closed head injury patients N=52	C.Random: yes ITT: yes Blinding: single Score:10 Viability (intervention): yes VAP determination: clinical	NG tube	EN (standard) total of 10 ⁹ bacteria i.e. 7 sachets of Golden Bifid: each 0.5 x 10 ⁸ <i>Bifidobacterium longum</i> , 0.5 X 10 ⁷ <i>Lactobacillus bulgaricus</i> and 0.5 X 10 ⁷ <i>Streptococcus thermophilus</i> for 21 days	EN (standard)
24	Cui 2013	Severe acute pancreatitis N=70	C.Random: no ITT: yes Blinding: no Score:9 Viability (intervention): yes	EN	EN + <i>bifidobacterium</i> , 4 capsules (each 210 mg, (12.4 x 10 ⁹ per gram), hence 2.604 x 10 ⁹ per 240 mg) every 12 hours, given through nasal gastric tube. Total dose per day 20.832 x 10 ⁹ .	EN

25	Wang 2013	Severe acute pancreatitis with intestinal ileus or abdominal distention. N=183	C.Random: no ITT: yes Blinding: no Score: 6 Viability (intervention): NR	SBFT	EN (standard) + capsules 0.5g TID containing <i>Bacillus subtilis</i> and <i>Enterococcus faecium</i> (5.0×10^7 <i>Bacillus subtilis</i> and 4.5×10^8 <i>Enterococcus faecium</i> per 250 g capsule). Unclear timeframe.	EN (standard)
26	Lopez de Toro 2014	Medical and surgical ICU pts with multi-organ failure N=89	C.Random: yes ITT: yes Blinding: no Score:11 Viability (intervention): NR	EN	EN + synbiotic drink with <i>streptococcus thermophilus</i> , <i>lactobacillus bulgaricus</i> , <i>lactobacillus casei</i> , <i>lactobacillus acidophilus</i> , <i>bifidobacterium</i> , <i>Escherichia coli</i> , <i>coliformes</i> x 7 days (max 4.8×10^9 UFC/ml).	EN and PN
27	Sanaie 2014	Critically ill pts, SIRS, expected LOS ≥ 7 days N=40	C.Random: yes ITT: yes Blinding: double Score:9 Viability (intervention): yes	NG tube	EN (standard) + 2 sachets VSL#3 BID x 7 days.	EN (standard) + placebo
28	Rongungruang 2015	Critically ill medical pts, no VAP at enrollment N=150	C.Random: no ITT: no Blinding: no Score:4 Viability (intervention): NR	EN and oral	80 ml fermented dairy product (8×10^9 cfu <i>Lactobacillus casei</i> [Shirota strain]) for oral care + 80 ml of the fermented dairy product via EN once daily for 28 days after extubated. EN feeding NR.	Standard care
29	Zeng 2016	Mixed ICU patients. N=250	C.Random: no ITT: no Blinding: single Score:8 Viability (intervention): yes	NG tube	EN + probiotic capsules 0.5g 3 times a day (active <i>Bacillus subtilis</i> and <i>Enterococcus faecalis</i> , concentration 4.5×10^9 per 0.25g and 0.5×10^9 per 0.25 g, respectively)	EN (standard)
30	Malik 2016	Mixed ICU patients, not taking microbial cell preparation prior to enrollment N=60	C.Random: yes ITT: no Blinding: double Score:9 Viability (intervention): NR	NG tube	EN + 3g packet (30 billion CFU of highly compatible, acid and bile resistant strains of <i>Lactobacillus acidophilus</i> , <i>Lactobacillus casei</i> , <i>Lactobacillus lactis</i> , <i>Bifidobacterium bifidum</i> , <i>Bifidobacterium longum</i> , <i>Bifidobacterium infantis</i> . Given twice daily for 7 days.	EN + placebo

31	de Castro Soares 2017	ICU pts with diarrhea receiving antibiotics N=60	C.Random: yes ITT: no Blinding: double Score:8 Viability (intervention): NR	Feeding tube	EN + four vials of <i>B. cereus</i> (Biovicerin) q6h (each vial contains 5x10 ⁶ sporulated <i>B. cereus</i> in liquid suspension.	EN + fibre (30g/day [10g q8h] of soluble fibre with 60% guar gum and 40% inulin.
32	Shariatpanahi 2018	ICU pts expected to stay for ≥7days N=37	C.Random: no ITT: no Blinding: double Score:5 Viability (intervention): NR	NG tube	Kitchen formula with 50% CHO (10 % from natural honey as a prebiotic), 20% protein and 30% lipid. Given enterally for 7 days.	Kitchen formula with 50% CHO (no honey), 20% protein and 30% lipid.
33	Wan 2020	Patients with severe traumatic brain injury (Glasgow Coma Scale 3-8) N=76	C.Random: no ITT: yes Blinding: no Score:7 Viability (intervention): NR	NG or oral	EN with probiotics tablets (210mg/per tablet) combining <i>Bifidobacterium longum</i> , <i>Lactobacillus bulgaricus</i> , and <i>Enterococcus faecalis</i> ≥1.0 x 10 ⁷ CFU. Given 6 tablets, 2X/day for 15 days	EN (standard).

C Random: concealed randomization
EN: enteral nutrition
NJ: nasojejunal

NG: nasogastric
OG: orogastric
FOS: fructooligosaccharides

CFU: Colony forming units
NR: not reported

Travis™: 1 capsule= *Lactobacillus acidophilus* La5, *Bifidobacterium lactis* Bb12, *Streptococcus thermophilus*, *Lactobacillus bulgaricus*, 4 x 10⁹/total

Synbiotic 2000 Forte: 10¹¹ CFU of each: *Pediococcus pentoseceus* 5-33:3, *Leuconostoc mesenteroides* 32-77:1, *L. paracasei* ssp *paracasei* 19, *L. plantarum* 2362 & 2.5 g each of: inulin, oat bran, pectin and resistant starch

Ergyphilus: 10¹⁰ *Lactobacillus rhamnosus* GG, *Lactobacillus casei*, *Lactobacillus acidophilus*, *Bifidobacterium bifidus*,

VSL # 3: > 10¹⁰ *Bifidobacterium longum*, *Bifidobacterium breve*, >10^{10g} *Bifidobacterium infantis*, >10^{11g} *Lactobacillus acidophilus*, *plantarum*, *casei*, *bulgaris* & *Streptococcus thermophilus*

Jinshuangqi: *Bifidobacterium longum* > 10⁷ CFU, *Lactobacillus bulgaricus* > 10⁶ CFU & *Streptococcus Thermophilus* > 10⁶ CFU

Ecologic 641: *Lactobacillus acidophilus*, *Lactobacillus casei*, *Lactobacillus salivarius*, *Lactococcus lactis*, *Bifidobacterium bifidum* & *Bifidobacterium lactis* (each has 10¹⁰ bacteria)

Synbiotic 2000: 10¹⁰ CFU of each: *Pediococcus pentoseceus* 5-33:3, *Leuconostoc mesenteroides* 32-77:1, *L. paracasei* ssp *paracasei* 19, *L. plantarum* 2362 & 2.5 g each of: betaglucon, inulin, pectin and resistant starch

Golden Bifid: 0.5 x 10⁸ *Bifidobacterium longum*, 0.5 X 10⁷ *Lactobacillus bulgaricus* and 0.5 X 10⁷ *Streptococcus thermophilus*

Synbiotics Medipham (Sweden): 1x10¹⁰ each: *Pediococcus pentosaceus*, *Leuconostoc mesenteroides*, *Lactobacillus paracasei*, *Lactobacillus plantarum* + 2.5 g each: beta-glucan, inulin, pectin, stabilizing starch

Culturelle: *Lactobacillus rhamnosus* GG, 10¹⁰ species/capsule

Ultra-Levure : *Saccharomyces boulardii*, 10¹⁰/1L solution

Lactinex: *Lactobacillus acidophilus* & *Lactobacillus bulgaricus*, 10⁸ live cells

Biovicerin: *B. Cereus*. Each vial contains 5*10⁶ of sporulated *B. Cereus*, in liquid suspension.

Table 1. Randomized studies evaluating Probiotics in critically ill patients (continued)

	Study	Mortality		Infections		Length of Stay		Diarrhea	
		Intervention	Control	Intervention	Control	Intervention	Control	Intervention	Control
1	Tempe 1983	3/20 (15)	3/20 (15)	NR	NR	NR	NR	Diarrhea days 34/389 (9)	Diarrhea days 63/373 (17)
2	Schlotterer 1987	NR	NR	NR	NR	NR	NR	Diarrhea days 3/150 (2)	Diarrhea days 19/143 (13)
3	Heimbürger 1994	NR	NR	NR	NR	NR	NR	Diarrhea 5/16 (31)	Diarrhea 2/18 (11)
4	Bleichner 1997	NR	NR	NR	NR	NR	NR	Diarrhea 18/64 (28) Days w/ diarrhea 91/648 (14)	Diarrhea 24/64 (38) Days w/ diarrhea 134/683 (20)
5	Kecskes 2003	Hospital 1/22 (5)	Hospital 2/23 (9)	Septic Complications 1/22 (5)	Septic Complications 7/23 (30)	Hospital 13.7 ± 8.7	Hospital 21.4 ± 17.9	NR	NR
6	Jain 2004	Hospital 22/45 (49)	Hospital 20/45 (45)	Septic Complications 33/45 (73)	Septic Complications 26/45 (58)	Hospital 24.0 ± 31.5 ICU 11.9 ± 13.1	Hospital 18.7 ± 13.5 ICU 9.0 ± 8.9	NR	NR
7	Lu 2004	Hospital 2/20 (10)	Hospital 1/20 (5)	Infectious Complications 8/20 (40)	Infectious Complications 11/20 (55)	NR	NR	NR	NR
8	Klarin 2005	Hospital 2/8 (25) ICU 1/8 (12)	Hospital 2/7 (29) ICU 2/7 (29)	NR	NR	Hospital 48.3 ± 30.4 ICU 14.2 ± 10.6	Hospital 34.3 ± 15.4 ICU 16.3 ± 15.7	NR	NR

9	McNaught 2005	18/52 (35)	18/51 (35)	Septic morbidity 21/52 (40)	Septic morbidity 22/51 (43)	ICU 5 (2-9)	ICU 4 (2-7)	NR	NR
10	Kotzampassi 2006	ICU 5/35 (14)	ICU 9/30 (30)	Infections 22/35 (63) VAP 19/35 (54) Septic Complications 17/35 (49) Central venous line infections 13/35 (37) Wound Infections 6/35 (17) UTI 6/35 (17)	Infections 27/30 (90) VAP 24/30 (80) Septic Complications 23/30 (77) Central venous line infections 20/30 (66) Wound Infections 8/30 (26) UTI 13/30 (43)	ICU 27.7 ± 15.2	ICU 41.3 ± 20.5	Diarrhea 5/35 (14)	Diarrhea 10/30 (30)
11	Alberda 2007	ICU 1/10 (10)	ICU 1/9 (11)	NR	NR	NR	NR	Diarrhea 1/10 (14)	Diarrhea 2/9 (23)
12	Li 2007	NR	NR	Infections 8/14 (58)	Infections 10/11 (91)	Hospital 42 ± 5.0	Hospital 49 ± 6.8	NR	NR
13	Oláh 2007	Hospital 2/33 (6)	Hospital 6/29 (21)	Infections 9/33 (27) Septic Complications 7/33 (12) Pancreatic Abscess 2/33 (6) Infected Pancreatic Necrosis 2/33 (6) UTI 3/33 (9)	Infections 15/29 (52) Septic Complications 17/29 (28) Pancreatic Abscess 2/29 (7) Infected Pancreatic Necrosis 6/29 (21) UTI 3/33 (9)	Hospital 14.9 ± 3.3	Hospital 19.7 ± 4.5	NR	NR

14	Forestier 2008	NR	NR	VAP 19/102 (19)	VAP 21/106 (20)	ICU 22.5 ± 20.6	ICU 19.7 ± 16.7	NR	NR
15	Besselink 2008	24/152 (16)	9/144 (6)	Infections 46/152 (30) VAP 24/152 (16) Bacteremia 33/152 (22) Infected necrosis 21/152 (14) Urosepsis 1/52 (2)	Infections 41/144 (28) VAP 16/144 (11) Bacteremia 22/144 (15) Infected necrosis 14/144 (10) Urosepsis 2/144 (1)	Hospital 28.9 ± 41.5 ICU 6.6 ± 17	Hospital 23.5 ± 25.9 ICU 3.0 ± 9.3	Diarrhea 25/152 (16)	Diarrhea 28/144 (19)
16	Klarin 2008	Hospital 3/22 (5) ICU 2/22 (9)	Hospital 2/22 (0) ICU 2/22 (9)	c. difficile+ fecal samples 0/71	c. difficile+ fecal samples 4/80	Hospital 25.8 ± 19.4 ICU 8.0 ± 5.4	Hospital 50.3 ± 75.2 ICU 11.6 ± 14	NR	NR
17	Knight 2009	Hospital 35/130 (27) ICU 28/130 (22)	Hospital 42/129 (33) ICU 34/129 (26)	VAP 12/130 (9)	VAP 17/129 (13)	ICU 6 (3-11)	ICU 7 (3-14)	Diarrhea 7/130 (5)	Diarrhea 9/129 (7)
18	Barraud 2010	ICU 21/87 (24) 28 days 22/87 (25) 90 days 27/87 (31)	ICU 21/80 (26) 28 days 19/80 (24) 90 days 24/80 (30)	All infections 30/87 (34) Infection > 96 hr 26/87 (30) VAP 23/87 (26) Catheter related BSI 3/87 (4) UTI 4/87 (5)	All infections 30/80 (38) Infection > 96 hr 29/80 (36) VAP 15/80 (19) Catheter related BSI 11/80 (14) UTI 4/89 (5)	Hospital 26.6 ± 22.3 ICU 18.7 ± 12.4	Hospital 28.9 ± 26.4 ICU 20.2 ± 20.8	Diarrhea 48/87 (55)	Diarrhea 42/80 (53)

19	Morrow 2010	12/68 (18)	15/70 (21)	VAP 13/73 (18)	VAP 28/73 (38)	Hospital 21.4 ± 14.9 (68) ICU 14.8 ± 11.8 (68)	Hospital 21.7 ± 17.4 (70) ICU 14.6 ± 11.6 (70)	Non C. Difficile Diarrhea 42/68 (62) C. difficile diarrhea 4/68 (6)	Non C. Difficile Diarrhea 44/70 (63) C. difficile diarrhea 13/70 (19)
20	Frohman 2010	5/20 (25)	3/25 (12)	NR	NR	ICU 7.3 ± 5.7	ICU 8.1 ± 4	Diarrhea episodes/pt/day 0.53 ± 0.54	Diarrhea episodes/pt/day 1.05 ± 1.08
21	Ferrie 2011	Hospital 2/18 (11) 6 months 7/18 (39)	Hospital 2/18 (11) 6 months 5/18 (28)	Infections 14/18 (78)	Infections 16/18 (89)	Hospital 54.50 ± 31.26 ICU 32.04 ± 24.46	Hospital 59.04 ± 33.92 ICU 29.75 ± 18.81	Duration of Diarrhea 3.83 ± 2.39 Loose stools/day 1.58 ± 0.88	Duration of Diarrhea 2.56 ± 1.85 Loose stools/day 1.10 ± 0.79
22	Sharma 2011	Hospital 2/24 (8)	Hospital 2/26 (8)	NR	NR	Hospital 13.23 ± 18.19 ICU 4.94 ± 9.54	Hospital 9.69 ± 9.69 ICU 4.0 ± 5.86	NR	NR
23	Tan 2011	28 day 3/26 (12)	28 day 5/26 (19)	Infections 9/26 (35) VAP 7/26 (27)	Infections 15/26 (58) VAP 13/26 (50)	ICU 6.8 ± 3.8 (26)	ICU 10.7 ± 7.3 (26)	NR	NR
24	Cui 2013	Hospital 1/23 (4)	Hospital 1/25 (4)	N/A	N/A	Hospital 10.4 ± 3.9 (23)	Hospital 13.4 ± 5.2 (25)	NR	NR
25	Wang 2013	1/62 (8.1)	3/61 (9.8)	Pancreatic sepsis 8/62 (13) MODS 7/62 (11.3)	Pancreatic sepsis 13/61 (21) MODS 15/61 (25)	NR	NR	NR	NR

26	Lopez de Toro 2014	Hospital 19/46 (41) ICU 15/46 (33)	Hospital 18/43 (42) ICU 14/43 (33)	Hospital acquired infections 9/46 (20)	Hospital acquired infections 13/43 (30)	Hospital 18.5 (10-36) ICU 9 (3-19)	Hospital 24.5 (10-38) ICU 8 (2.5-16.5)	NR	NR
27	Sanaie 2014	28 day 2/20 (10)	28 day 5/20 (25)	Bacteremia 2/20(10)	Bacteremia 5/20(25)	ICU 13.85 ± 6.96	ICU 14.16 ± 5.97	NR	NR
28	Rongunruang 2015	28 day 18/75 (24) 90 day 25/75 (33)	28 day 17/75 (23) 90 day 26/75 (35)	VAP 18/75 (24)	VAP 22/75 (29)	ICU 30.5 (4-98) Hospital 20 (2-106)	ICU 19 (5-30) Hospital 19 (3-171)	Diarrhea 19/75 (25)	Diarrhea 14/75 (19)
30	Zeng 2016	Hospital 26/118 (22.0) ICU 15/118 (13)	Hospital 25/117 (21.4) ICU 9/117 (8)	Clinically diagnosed VAP 48/118 (41) Micro confirmed VAP 43/118 (36)	Clinically diagnosed VAP 62/117 (53) Micro confirmed VAP 59/117 (50)	ICU 18 [IQR 14-32] Hospital 13.5 ± 12.4	ICU 22 [IQR 11-56] Hospital 10.6 ± 10.2	NR	NR
31	Malik 2016	NR	NR	NR	NR	ICU 10.9 ± 3.9 (24)	ICU 15.8 ± 7.8 (25)	NR	NR
32	De Castro Soares 2017	NR	NR	NR	NR	NR	NR	Days to cease Diarrhea 2.5 ± 1.3	Days to cease Diarrhea 3.7 ± 1.1 P=0.011
33	Shariatpanahi 2018	ICU 3/16 (18.8)	ICU 4/16 (25)	NR	NR	ICU 5.5±1.2	ICU 7.3±1.3	# patients with diarrhea 1/16 (6.3)	# patients with diarrhea 3/16 (18.8)
34	Wan 2020	1 month 5/38 (13)	1 month 7/38 (18)	Sepsis 4/38 (11) Pulmonary infection 17/38 (45)	Sepsis 3/38 (8) Pulmonary infection 28/38 (74)	ICU 10.32±5.31	ICU 14.24±6.79	NR	NR

NR: Not Reported
VAP: Ventilator Associated Pneumonia

UTI: Urinary Tract Infection
ICU: Intensive Care Unit

BSI: Blood Stream Infection

Figure 1. Overall Mortality

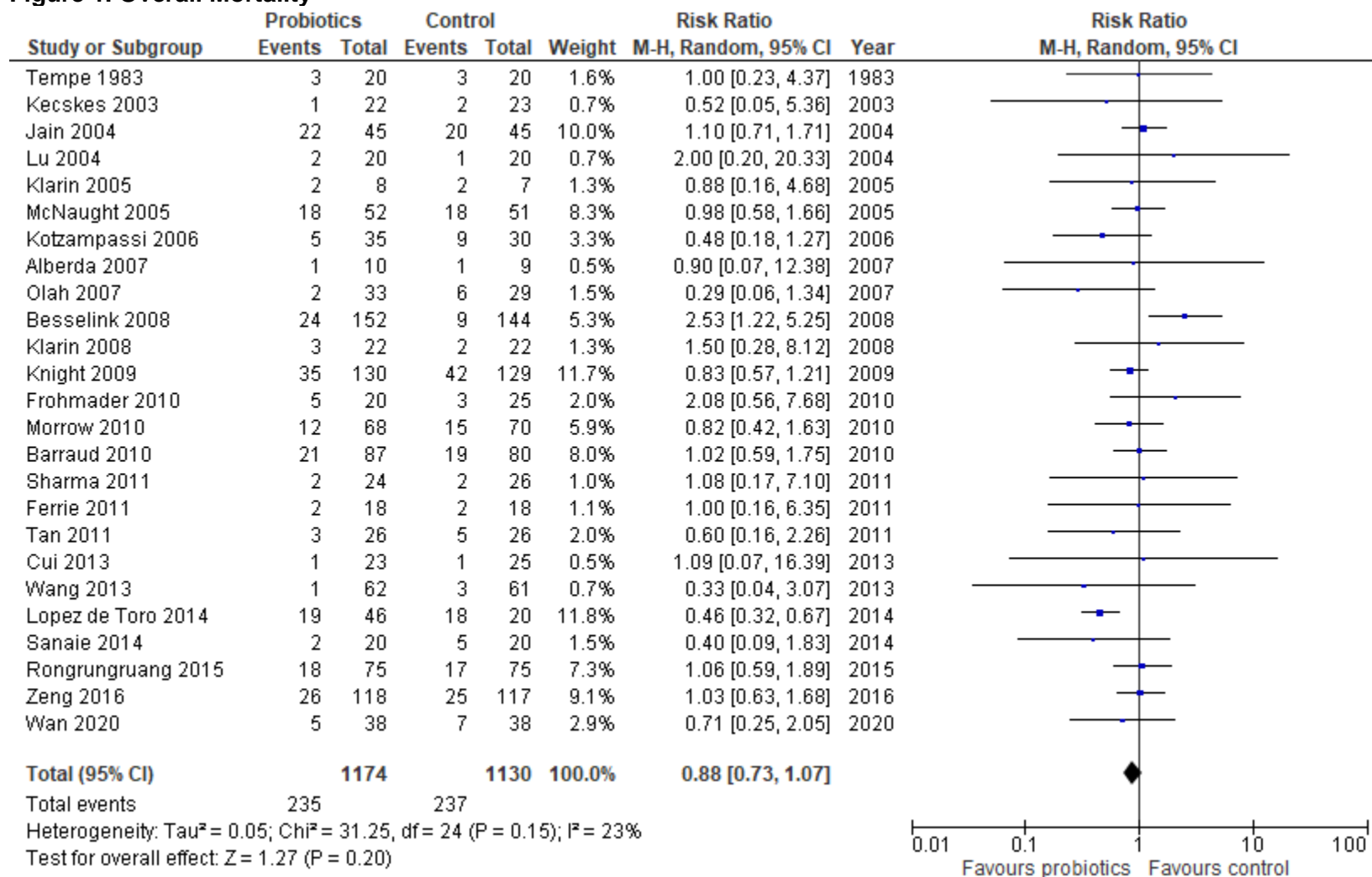


Figure 2. Hospital Mortality

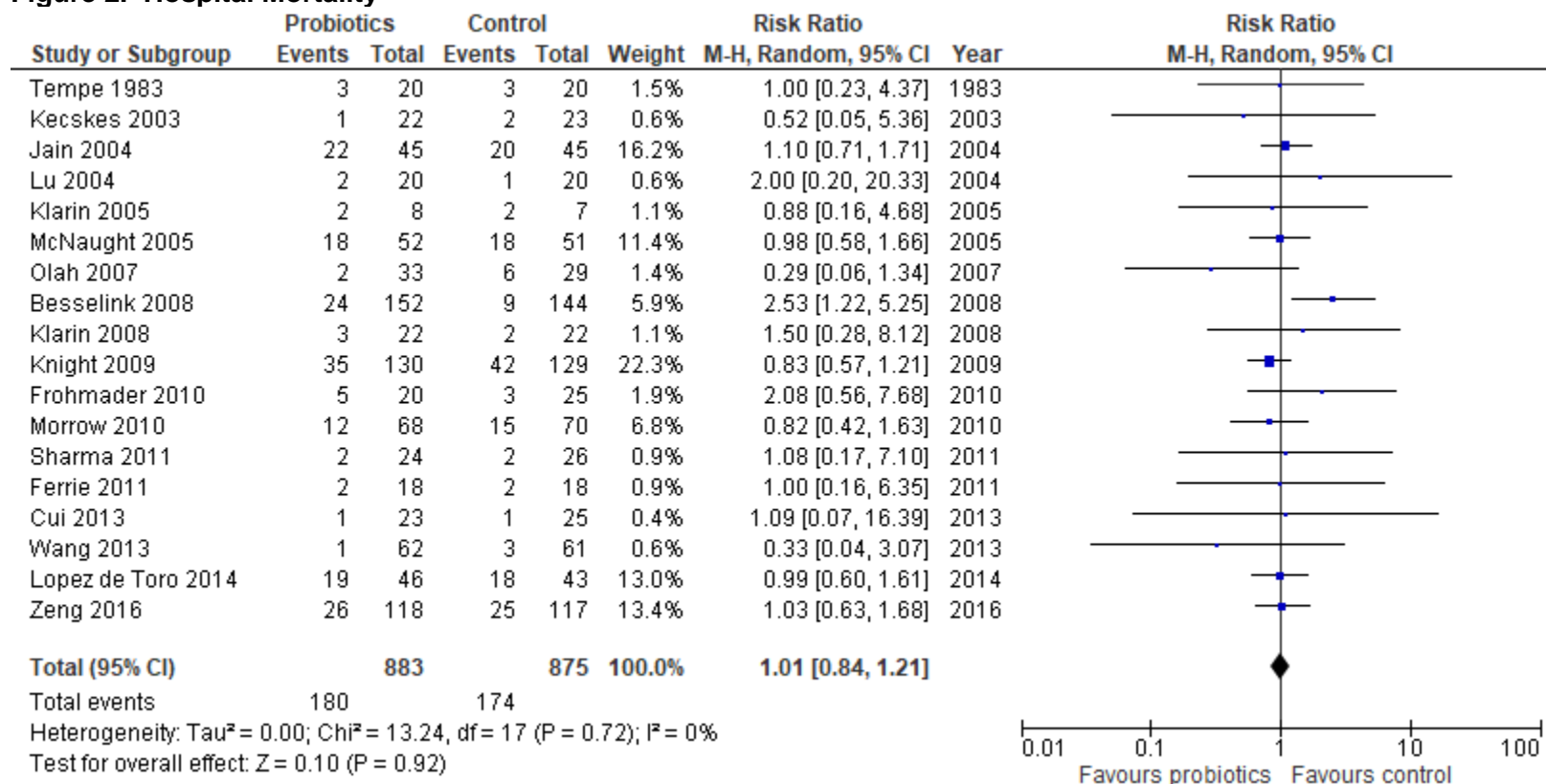


Figure 3. ICU Mortality

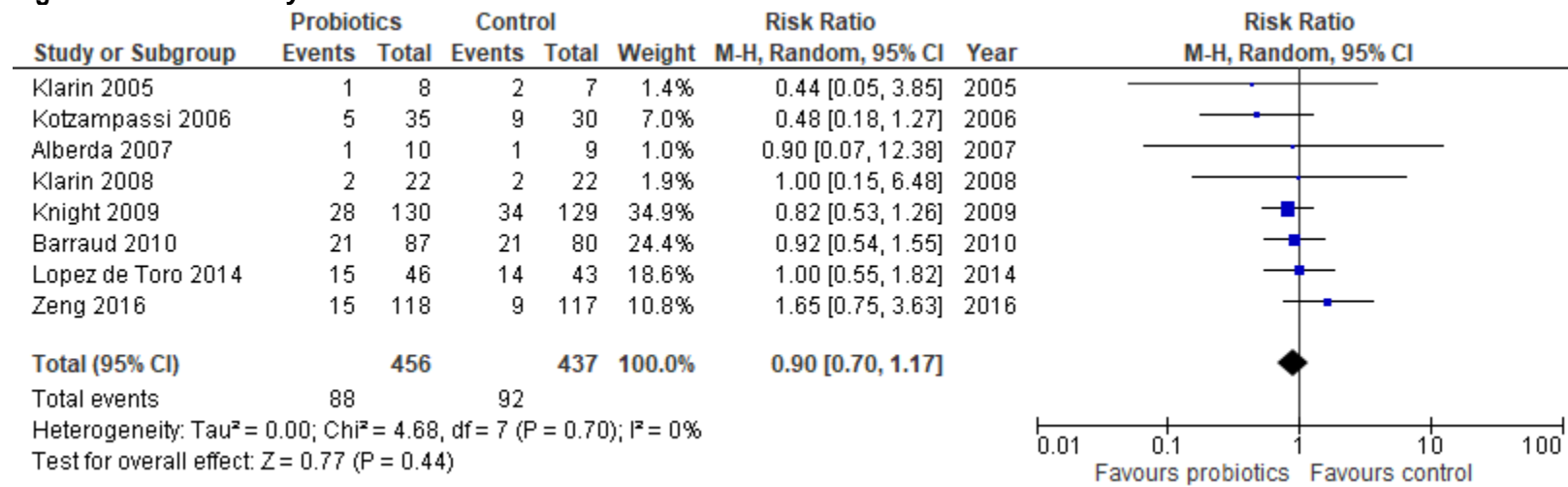


Figure 4. Overall Infections

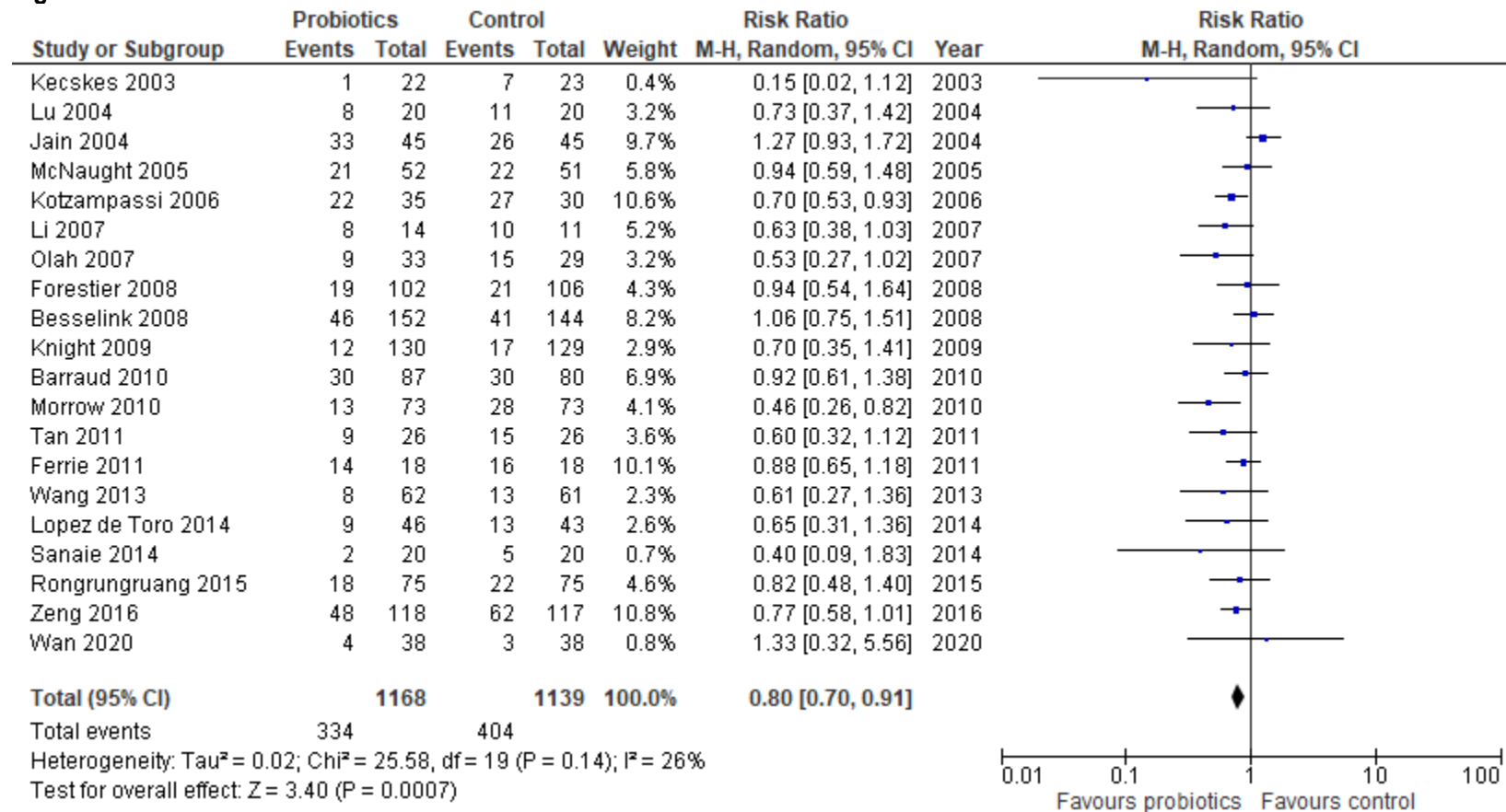


Figure 5. VAP

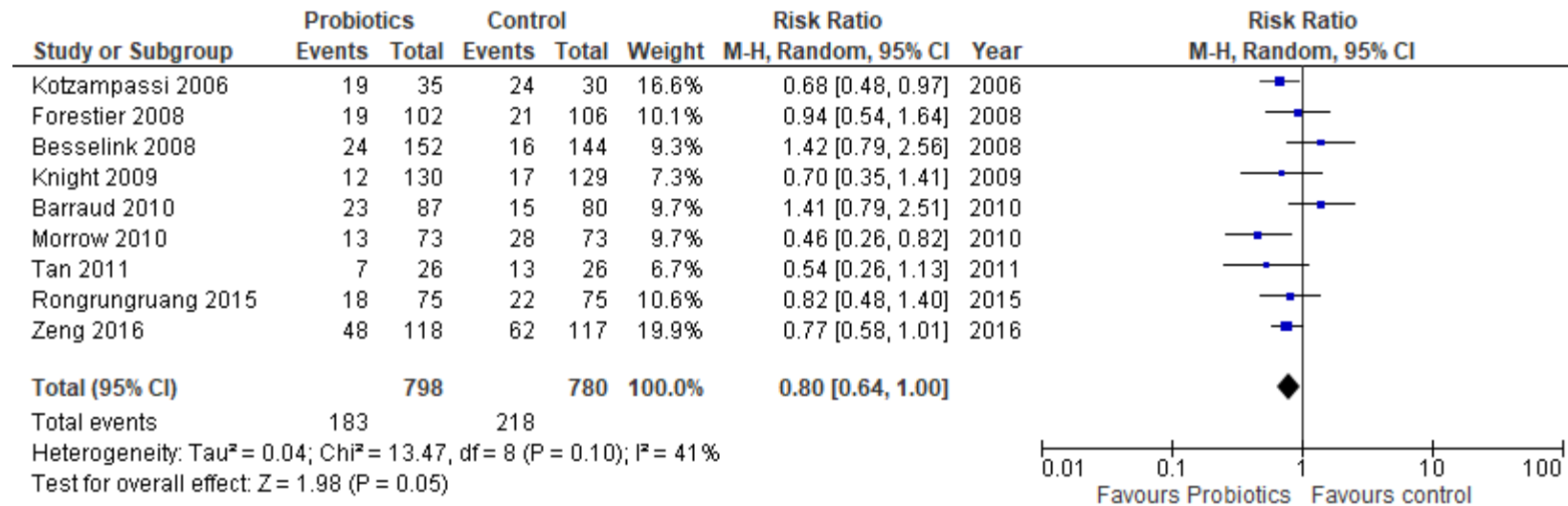
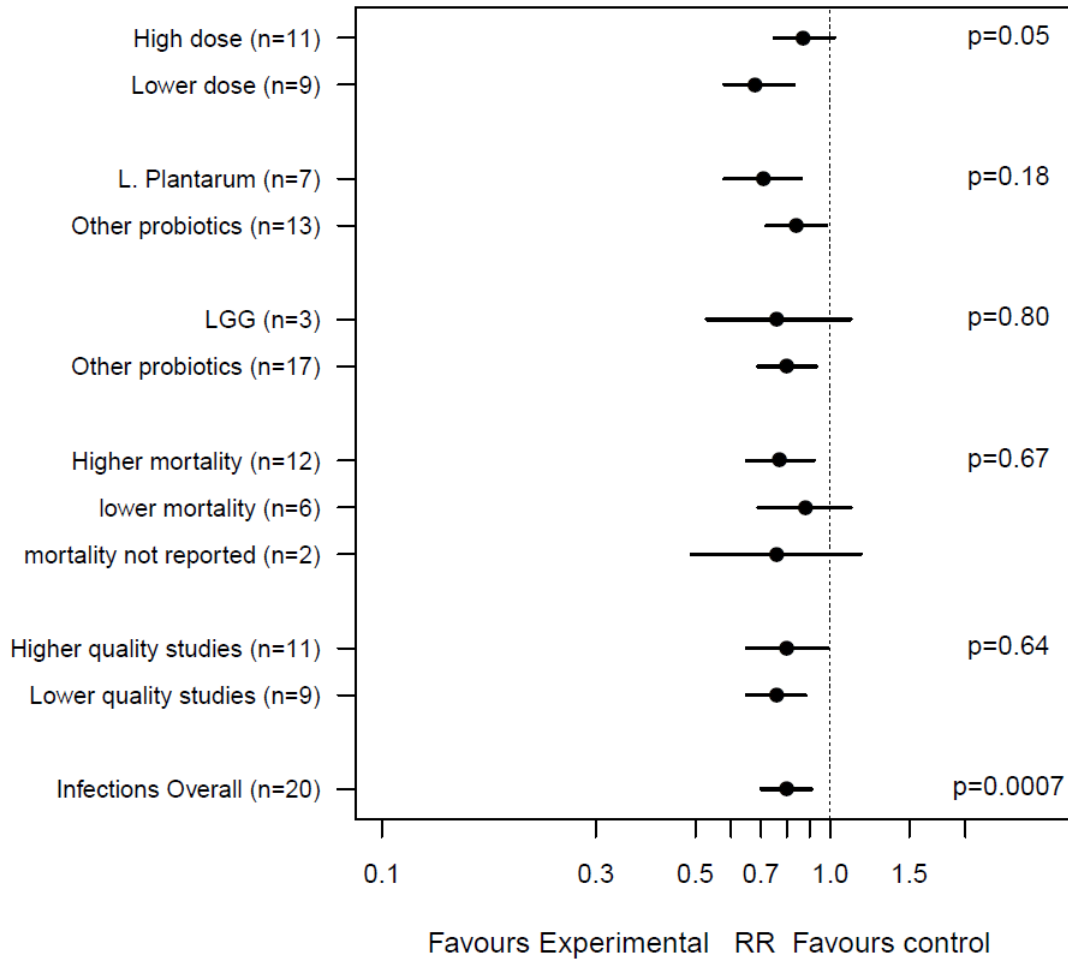


Figure 6. Effect of Probiotics on Infections: Subgroup Analyses



Legend: Numbers in brackets indicate the number of studies.

RR: Risk ratio

p values for the subgroups indicate the differences in the subgroup effect of probiotics on infections.

LGG= *Lactobacillus rhamnosus* GG

Figure 7. Hospital Length of Stay

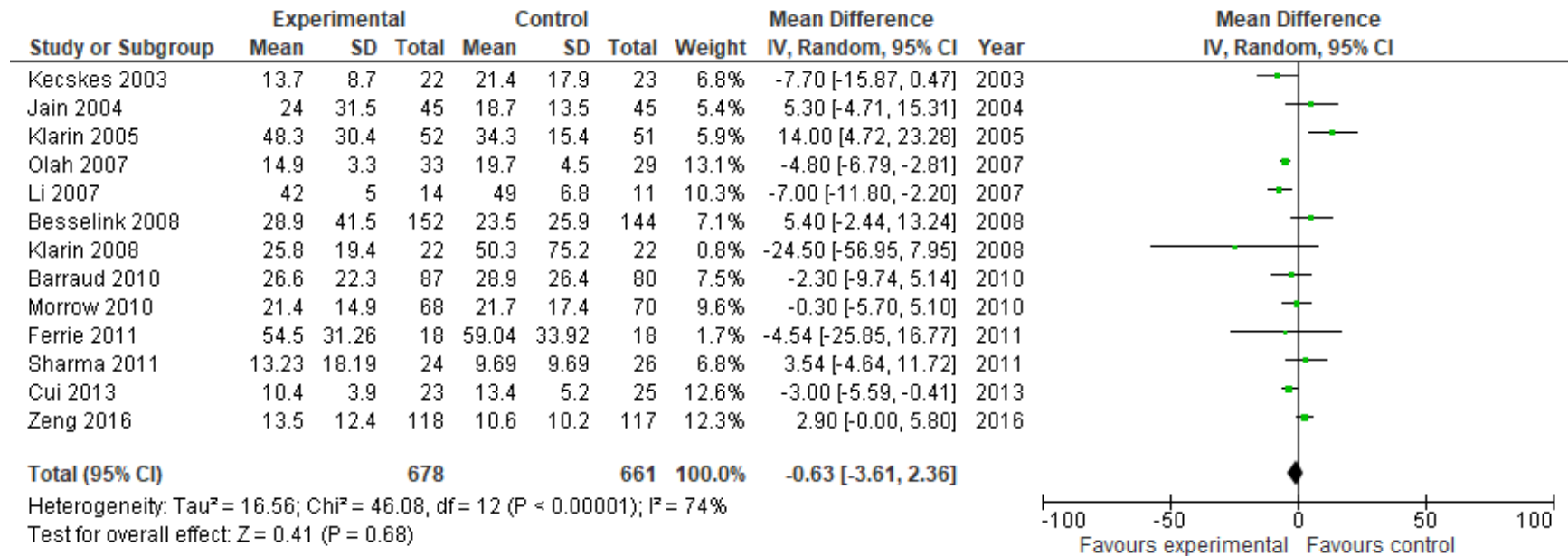


Figure 8. ICU LOS

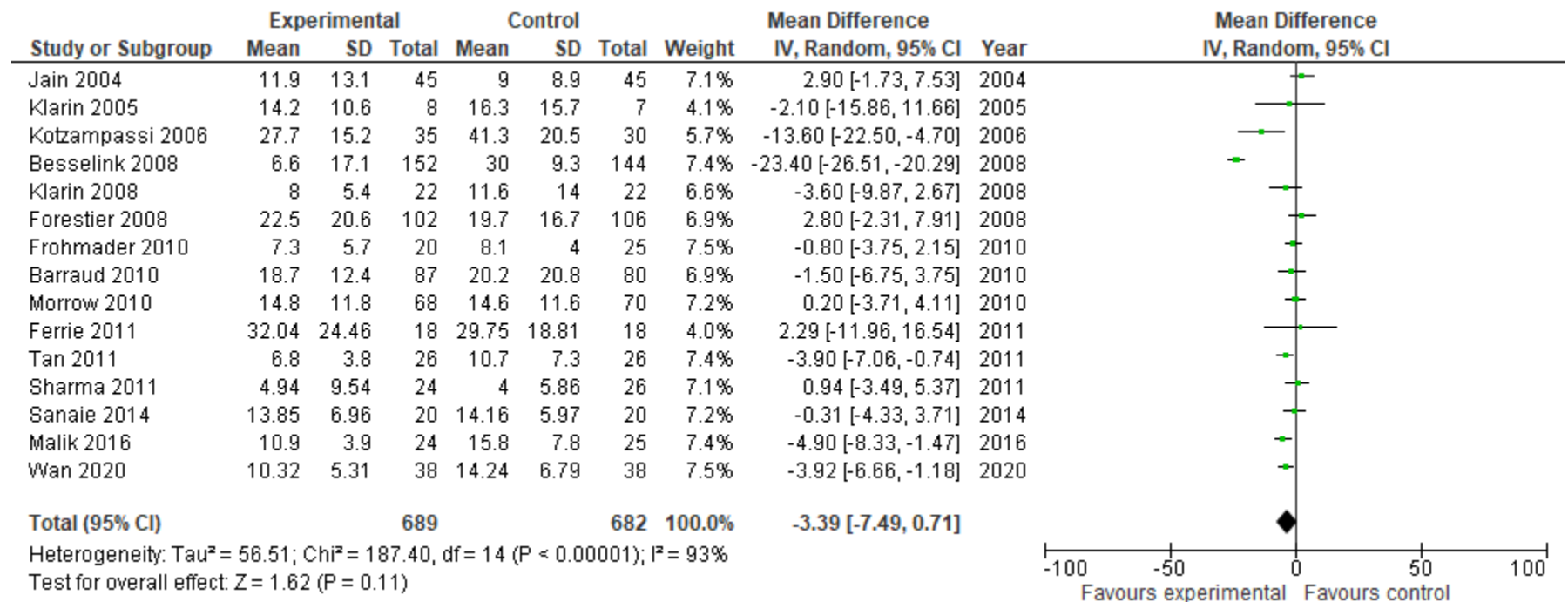
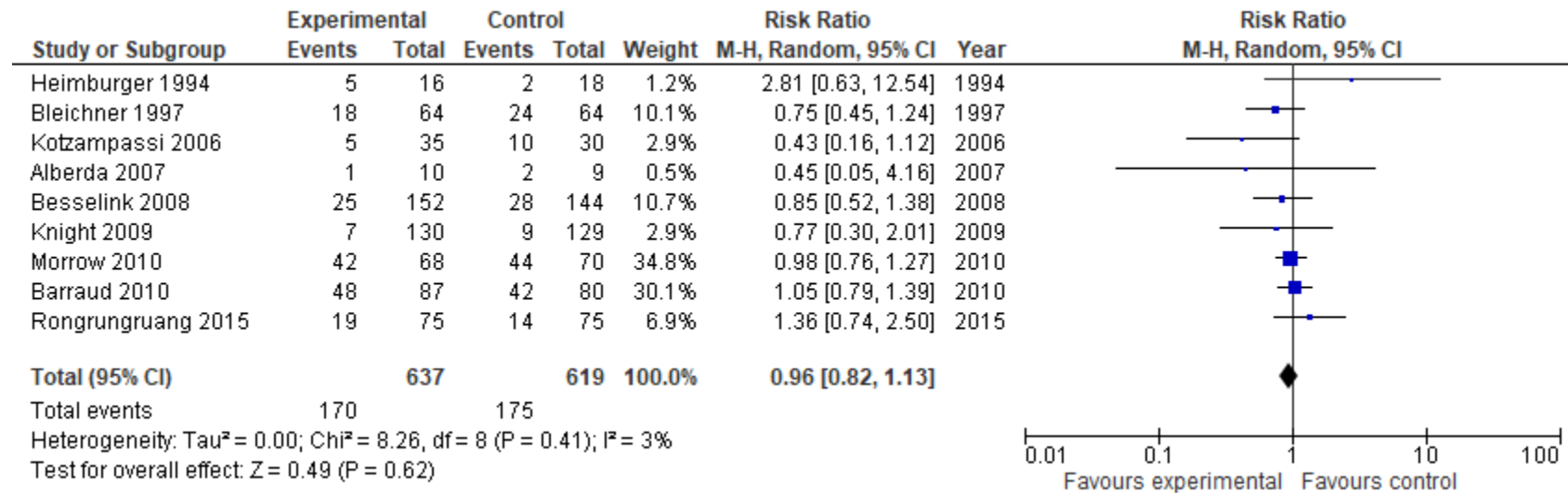


Figure 9. Diarrhea



Included Studies

1. Tempe JD, Steidel AL, Blehaut H, Hasselmann M, Lutun P, Maurier F. [Prevention of diarrhea administering *Saccharomyces boulardii* during continuous enteral feeding] *Sem Hop.* 1983 May 5; 59(18): 1409-12.
2. Schlotterer M, Bernasconi P, Lebreton F, Wasserman D. Intérêt de *Saccharomyces boulardii* dans la tolérance digestive de la nutrition entérale à débit continu chez le brûlé. *Nutr Clin Métabol.* 1987;1:31-34
3. Heimbürger DC, Sockwell DG, Geels WJ. Diarrhea with enteral feeding: prospective reappraisal of putative causes. *Nutrition.* 1994;10(5):392
4. Bleichner G, Blehaut H, Mentec H, Moysé D. *Saccharomyces boulardii* prevents diarrhea in critically ill tube-fed patients. A multicenter, randomized, double-blind placebo-controlled trial. *Intensive Care Med.* 1997 May; 23(5): 517-23.
5. Kecskés G, Belágyi T, Oláh A. [Early jejunal nutrition with combined pre- and probiotics in acute pancreatitis--prospective, randomized, double-blind investigations] [Article in Hungarian] *Magy Seb.* 2003 Feb;56(1):3-8.
6. Jain PK, McNaught CE, Anderson AD, MacFie J, Mitchell CJ. Influence of synbiotic containing *Lactobacillus acidophilus* La5, *Bifidobacterium lactis* Bb 12, *Streptococcus thermophilus*, *Lactobacillus bulgaricus* and oligofructose on gut barrier function and sepsis in critically ill patients: a randomised controlled trial. *Clin Nutr.* 2004 Aug;23(4):467-75.
7. Lu X, Han CM, Yu JX, Fu SZ. [Preliminary comparative study on the effects of early enteral supplementation of synbiotics on severely burned patients] [Article in Chinese]. *Zhonghua Shao Shang Za Zhi.* 2004 Aug;20(4):198-201.
8. Klarin B, Johansson ML, Molin G, Larsson A, Jeppsson B. Adhesion of the probiotic bacterium *Lactobacillus plantarum* 299v onto the gut mucosa in critically ill patients: a randomised open trial. *Crit Care.* 2005 Jun;9(3):R285-93.
9. McNaught CE, Woodcock NP, Anderson AD, MacFie J. A prospective randomised trial of probiotics in critically ill patients. *Clin Nutr.* 2005 Apr;24(2):211-9.
10. Kotzampassi K, Giamarellos-Bourboulis EJ, Voudouris A, Kazamias P, Eleftheriadis E. Benefits of a symbiotic formula (Synbiotic 2000Forte) in critically ill trauma patients: early results of a randomized controlled trial. *World J Surg* 2006;30(10):1848-55.
11. Alberda C, Gramlich L, Meddings J, Field C, McCargar L, Kutsogiannis D, Fedorak R, Madsen K. Effects of probiotic therapy in critically ill patients: a randomized, double-blind, placebo-controlled trial. *Am J Clin Nutr* 2007;85(3):816-23.
12. Li YM (2007) Adjuvant therapy for probiotics in patients with severe acute pancreatitis: an analysis of 14 cases. *World Chin J Digestol* 15(3):302–304
13. Oláh A, Belágyi T, Poto L, Romics L Jr, Bengmark S. Synbiotic control of inflammation and infection in severe acute pancreatitis: a prospective, randomized, double blind study. *Hepatogastroenterology* 2007;54(74):590-4.
14. Forestier C, Guelon D, Cluytens V, Gillart T, Sirot J, De Champs C. Oral probiotic and prevention of *Pseudomonas aeruginosa* infections : a randomized, double-blind, placebo-controlled pilot study in intensive care unit patients. *Crit Care* 2008;12(3):R69
15. Besselink MG, van Santvoort HC, Buskens E, Boermeester MA, van Goor H, Timmerman HM, Nieuwenhuijs VB, Bollen TL, van Ramshorst B, Witteman BJ, Rosman C, Ploeg RJ, Brink MA, Schaapherder AF, Dejong CH, Wahab PJ, van Laarhoven CJ, van der Harst E, van Eijck CH, Cuesta MA, Akkermans LM, Gooszen HG; Dutch Acute Pancreatitis Study Group. Probiotic prophylaxis in predicted severe acute pancreatitis: a randomised, double-blind, placebo-controlled trial. *Lancet.* 2008 Feb 23;371(9613):651-9.
16. Klarin B, Wullt M, Palmquist I, Molin G, Larsson A, Jeppsson B. *Lactobacillus plantarum* 299v reduces colonisation of *Clostridium difficile* in critically ill patients treated with antibiotics. *Acta Anaesthesiol Scand.* 2008 Sep;52(8):1096-102.
17. Knight DJ, Gardiner D, Banks A, Snape SE, Weston VC, Bengmark S, Girling KJ. Effect of synbiotic therapy on the incidence of ventilator associated pneumonia in critically ill patients: a randomised, double-blind, placebo-controlled trial. *Intensive Care Med.* 2009 May;35(5):854-61.
18. Barraud D, Blard C, Hein F, Marçon O, Cravoisy A, Nace L, Alla F, Bollaert PE, Gibot S. Probiotics in the critically ill patient: a double blind, randomized, placebo-controlled trial. *Intensive Care Med.* 2010 Sep;36(9):1540-7.

19. Morrow LE, Kollef MH, Casale TB. Probiotic prophylaxis of ventilator-associated pneumonia: a blinded, randomized, controlled trial. *Am J Respir Crit Care Med*. 2010 Oct 15;182(8):1058-64.
20. Frohmader TJ, Chaboyer WP, Robertson IK, et al. Decrease in frequency of liquid stool in enterally fed critically ill patients given the multispecies probiotic VSL#3: A pilot trial. *Am J Crit Care* 2010; 19:e1–e11
21. Ferrie S, Daley M. Lactobacillus GG as treatment for diarrhea during enteral feeding in critical illness: randomized controlled trial. *JPEN J Parenter Enteral Nutr*. 2011 Jan;35(1):43-9.
22. Sharma B, Srivastava S, Singh N, Sachdev V, Kapur S, Saraya A. Role of probiotics on gut permeability and endotoxemia in patients with acute pancreatitis: a double-blind randomized controlled trial. *J Clin Gastroenterol*. 2011 May-Jun;45(5):442-8.
23. Tan M, Zhu JC, Du J, Zhang LM, Yin HH. Effects of probiotics on serum levels of Th1/Th2 cytokine and clinical outcomes in severe traumatic brain-injured patients: a prospective randomized pilot study. *Crit Care*. 2011;15(6):R290.
24. Cui LH, Wang XH, Peng LH, Yu L, Yang YS. [The effects of early enteral nutrition with addition of probiotics on the prognosis of patients suffering from severe acute pancreatitis]. *Zhonghua Wei Zhong Bing Ji Jiu Yi Xue*. 2013 Apr;25(4):224-8.
25. Wang G, Wen J, Xu L, Zhou S, Gong M, Wen P, Xiao X. Effect of enteral nutrition and ecoinmunonutrition on bacterial translocation and cytokine production in patients with severe acute pancreatitis. *J Surg Res*. 2013 Aug;183(2):592-7.
26. López de Toro Martín-Consuegra I, Sanchez-Casado M, Pérez-Pedrero Sánchez-Belmonte MJ, López-Reina Torrijos P, Sánchez-Rodríguez P, Raigal-Cañó A, Heredero-Galvez E, Zubigaray SB, Arrese-Coscolluela MÁ. [The influence of symbiotics in multi-organ failure: randomised trial]. *Med Clin (Barc)*. 2014 Aug 19;143(4):143-9.
27. Sanaie S, Ebrahimi-Mameghani M, Hamishehkar H, Mojtahedzadeh M, Mahmoodpoor A. Effect of a multispecies probiotic on inflammatory markers in critically ill patients: A randomized, double-blind, placebo-controlled trial. *J Res Med Sci* 2014 Sept; 19:827-33
28. Rongrungruang Y, Krajangwittaya D, Pholtawornkulchai K, Tiengrim S, Thamlikitkul V. Randomized controlled study of probiotics containing *Lactobacillus casei* (Shirota strain) for prevention of ventilator-associated pneumonia. *J Med Assoc Thai*. 2015 Mar;98(3):253-9.
29. Zeng J, Wang CT, Zhang FS, Qi F, Wang SF, Ma S, Wu TJ, Tian H, Tian ZT, Zhang SL, Qu Y, Liu LY, Li YZ, Cui S, Zhao HL, Du QS, Ma Z, Li CH, Li Y, Si M, Chu YF, Meng M, Ren HS, Zhang JC, Jiang JJ, Ding M, Wang YP. Effect of probiotics on the incidence of ventilator-associated pneumonia in critically ill patients: a randomized controlled multicenter trial. *Intensive Care Med*. 2016 Jun;42(6):1018-28. doi: 10.1007/s00134-016-4303-x.
30. Malik AA, Rajandram R, Tah PC, Hakumat-Rai VR, Chin KF. Microbial cell preparation in enteral feeding in critically ill patients: A randomized, double-blind, placebo-controlled clinical trial. *J Crit Care*. 2016 Apr;32:182-8.
31. de Castro Soares GG, Marinho CH, Pitol R, Andretta C, Oliveira E, Martins C, Riella M.C. Sporulated *Bacillus* as alternative treatment for diarrhea of hospitalized adult patients under enteral nutrition: A pilot randomized controlled study. *Clinical Nutrition ESPEN*. (in press), 2017
32. Wan G, Wang L, Zhang G, et al. Effects of probiotics combined with early enteral nutrition on endothelin-1 and C-reactive protein levels and prognosis in patients with severe traumatic brain injury. *J Int Med Res*. 2020;48(3):300060519888112. doi:10.1177/0300060519888112

Excluded Studies

No	Reasons	References	Source
1.	Not EN fed patients	de Felipe Júnior J, da Rocha e Silva Júnior M, Maciel FM, Soares Ade M, Mendes NF. Infection prevention in patients with severe multiple trauma with the immunomodulator beta 1-3 polyglucose (glucan). <i>Surg Gynecol Obstet.</i> 1993 Oct;177(4):383-8.	CCN
2.	Not ICU pts	Niedzielin K, Kordecki H, Birkenfeld B. A controlled, double-blind, randomized study on the efficacy of <i>Lactobacillus plantarum</i> 299V in patients with irritable bowel syndrome. <i>Eur J Gastroenterol Hepatol.</i> 2001 Oct;13(10):1143-7.	CCN
3.—	Elective surgery pts	McNaught CE, Woodcock NP, MacFie J, Mitchell CJ. A prospective randomised study of the probiotic <i>Lactobacillus plantarum</i> 299V on indices of gut barrier function in elective surgical patients. <i>Gut.</i> 2002 Dec;51(6):827-31.	
4.—	Elective surgery pts	Prantera C, Scribano ML, Falasco G, Andreoli A, Luzi C. Ineffectiveness of probiotics in preventing recurrence after curative resection for Crohn's disease: a randomised controlled trial with <i>Lactobacillus GG</i> . <i>Gut.</i> 2002 Sep;51(3):405-9.	
5.	Elective surgery pts	Rayes N, Hansen S, Seehofer D, Müller AR, Serke S, Bengmark S, Neuhaus P. Early enteral supply of fiber and <i>Lactobacilli</i> versus conventional nutrition: a controlled trial in patients with major abdominal surgery. <i>Nutrition.</i> 2002 Jul-Aug;18(7-8):609-15.	Search
6.	Liver transplant pts	Rayes N, Seehofer D, Hansen S, Boucsein K, Müller AR, Serke S, Bengmark S, Neuhaus P. Early enteral supply of <i>Lactobacillus</i> and fiber versus selective bowel decontamination: a controlled trial in liver transplant recipients. <i>Transplantation.</i> 2002 Jul 15;74(1):123-7.	Search
7.	Duplicate of Transplantation 2002	Rayes N, Seehofer D, Müller AR, Hansen S, Bengmark S, Neuhaus P. [Influence of probiotics and fibre on the incidence of bacterial infections following major abdominal surgery - results of a prospective trial] [Article in German]. <i>Z Gastroenterol.</i> 2002 Oct;40(10):869-76.	Search
8.	Not ICU pts	Oláh A, Belágyi T, Issekutz A, Gamal ME, Bengmark S. Randomized clinical trial of specific <i>Lactobacillus</i> and fibre supplement to early enteral nutrition in patients with acute pancreatitis. <i>Br J Surg.</i> 2002;89(9):1103-1107. doi:10.1046/j.1365-2168.2002.02189.x	Search
9.—	Elective surgery pts	Anderson AD, McNaught CE, Jain PK, MacFie J. Randomised clinical trial of synbiotic therapy in elective surgical patients. <i>Gut.</i> 2004 Feb;53(2):241-5.	
10.	Glutamine + probiotics	Falcão de Arruda IS, de Aguiar-Nascimento JE. Benefits of early enteral nutrition with glutamine and probiotics in brain injury patients. <i>Clin Sci (Lond).</i> 2004 Mar;106(3):287-92.	Search
11.	Elective surgery pts	Woodcock NP, McNaught CE, Morgan DR, Gregg KL, MacFie J. An investigation into the effect of a probiotic on gut immune function in surgical patients. <i>Clin Nutr.</i> 2004 Oct;23(5):1069-73.	CCN
12.	Not ICU pts	Kanazawa H, Nagino M, Kamiya S, Komatsu S, Mayumi T, Takagi K, Asahara T, Nomoto K, Tanaka R, Nimura Y. Synbiotics reduce postoperative infectious complications: a randomized controlled trial in biliary cancer patients undergoing hepatectomy. <i>Langenbecks Arch Surg.</i> 2005 Apr;390(2):104-13. Epub 2005 Feb 12.	CCN
13.	Duplicate of Oláh 2007	Oláh A, Belágyi T, Issekutz A, Olgay G. [Combination of early nasojejunal feeding with modern synbiotic therapy in the treatment of severe acute pancreatitis (prospective, randomized, double-blind study)] [Article in Hungarian]. <i>Magy Seb.</i> 2005 Jun;58(3):173-8.	Search
14.	Not critically ill	Olguin F, Araya M, Hirsch S, Brunser O, Ayala V, Rivera R, Gotteland M. Prebiotic ingestion does not improve gastrointestinal barrier function in burn patients. <i>Burns.</i> 2005 Jun;31(4):482-8. Epub 2005 Feb 16.	Search

15.	Transplant pts	Rayes N, Seehofer D, Theruvath T, Schiller RA, Langrehr JM, Jonas S, Bengmark S, Neuhaus P. Supply of pre- and probiotics reduces bacterial infection rates after liver transplantation--a randomized, double-blind trial. <i>Am J Transplant</i> . 2005 Jan;5(1):125-30.	Search
16.—	Abstract only- Contacted authors, unable to retrieve data	Voudouris A, Kazamias P, Spyridaki E, Antonopoulou A, Giamarellos-Bourboulis E, Skourtis C, Kotzampassi K. Benefits of symbiotic 2000 forte in critically ill patients: a randomized controlled trial. <i>Critical Care</i> . 2005 March9(S1):S152	CCN
17.—	Abstract only, unable to get data from authors	Dadak L, Stouracova M, Kuklinek P, Stotka P, Sramek V. Impact of synbiotics (Synbiotic 2000 Forte) on monocyte function in long-term ICU patients. <i>Critical Care</i> . 2006; 10(Suppl): P212	CCN
18.—	Abstract only, unable to get data from authors	Gommersall et al. Does routine administration of probiotics improve outcome of critically ill patients? ANZCA 2006	CCN
19.—	Not ICU pts	Marteau P, Lémann M, Seksik P, Laharie D, Colombel JF, Bouhnik Y, Cadiot G, Soulé JC, Bourroille A, Metman E, Lerebours E, Carbonnel F, Dupas JL, Veyrac M, Coffin B, Moreau J, Abitbol V, Blum-Sperisen S, Mary JY. Ineffectiveness of <i>Lactobacillus johnsonii</i> LA1 for prophylaxis of postoperative recurrence in Crohn's disease: a randomised, double blind, placebo controlled GETAID trial. <i>Gut</i> . 2006 Jun;55(6):842-7.	
20.—	Elective surgery pts	Sugawara G, Nagino M, Nishio H, Ebata T, Takagi K, Asahara T, Nomoto K, Nimura Y. Perioperative synbiotic treatment to prevent postoperative infectious complications in biliary cancer surgery: a randomized controlled trial. <i>Ann Surg</i> . 2006 Nov;244(5):706-14.	
21.	Not ICU pts	Beausoleil M, Fortier N, Guénette S, L'ecuyer A, Savoie M, Franco M, Lachaine J, Weiss K. Effect of a fermented milk combining <i>Lactobacillus acidophilus</i> C11285 and <i>Lactobacillus casei</i> in the prevention of antibiotic-associated diarrhea: a randomized, double-blind, placebo-controlled trial. <i>Can J Gastroenterol</i> . 2007 Nov;21(11):732-6.	CCN
22.	Not ICU pts	Hickson M, D'Souza AL, Muthu N, Rogers TR, Want S, Rajkumar C, Bulpitt CJ. Use of probiotic <i>Lactobacillus</i> preparation to prevent diarrhoea associated with antibiotics: randomised double blind placebo controlled trial. <i>BMJ</i> . 2007 Jul 14;335(7610):80. Epub 2007 Jun 29.	CCN
23.	Not ICU pts	Wan 2021 10.3748/wjg.v27.i2.224	Search
24.	Not ICU pts	Stadlbauer 2019. 10.3920/BM2018.0067	Search
25.	Prebiotics only	Karakan T, Ergun M, Dogan I, Cindoruk M, Unal S. Comparison of early enteral nutrition in severe acute pancreatitis with prebiotic fiber supplementation versus standard enteral solution: a prospective randomized double-blind study. <i>World J Gastroenterol</i> 2007;13(19):2733-7.	Search
26.	Elective surgery patients	Nomura T, Tsuchiya Y, Nashimoto A, Yabusaki H, Takii Y, Nakagawa S, Sato N, Kanbayashi C, Tanaka O. Probiotics reduce infectious complications after pancreaticoduodenectomy. <i>Hepatogastroenterology</i> . 2007 Apr-May;54(75):661-3.	CCN
27.	Elective surgery patients	Rayes N, Seehofer D, Theruvath T, Mogl M, Langrehr JM, Nüssler NC, Bengmark S, Neuhaus P. Effect of enteral nutrition and synbiotics on bacterial infection rates after pylorus-preserving pancreaticoduodenectomy: a randomized, double-blind trial. <i>Ann Surg</i> . 2007 Jul;246(1):36-41.	Search

28.	Not critically ill patients	Qin HL, Zheng JJ, Tong DN, Chen WX, Fan XB, Hang XM, Jiang YQ. Effect of <i>Lactobacillus plantarum</i> enteral feeding on the gut permeability and septic complications in the patients with acute pancreatitis. <i>Eur J Clin Nutr</i> . 2008 Jul;62(7):923-30. Epub 2007 Jun 20.	Search
29.	Elective surgery pts, too many interventions	Reddy BS, Macfie J, Gatt M, Larsen CN, Jensen SS, Leser TD. Randomized clinical trial of effect of synbiotics, neomycin and mechanical bowel preparation on intestinal barrier function in patients undergoing colectomy. <i>Br J Surg</i> . 2007 May;94(5):546-54.	
30.	Too many interventions [synbiotics, prebiotics, glutamine & peptide]	Spindler-Vesel A, Bengmark S, Vovk I, Cerovic O, Kompan L. Synbiotics, prebiotics, glutamine, or peptide in early enteral nutrition: a randomized study in trauma patients. <i>JPEN J Parenter Enteral Nutr</i> . 2007 Mar-Apr;31(2):119-26.	Search
31.	Duplicate of Besselink Lancet 2008	Besselink MG, van Santvoort HC, Buskens E, Boermeester MA, van Goor H, Timmerman HM, Nieuwenhuijs VB, Bollen TL, van Ramshorst B, Witteman BJ, Rosman C, Ploeg RJ, Brink MA, Schaapherder AF, Dejong CH, Wahab PJ, van Laarhoven CJ, van der Harst E, van Eijck CH, Cuesta MA, Akkermans LM, Gooszen HG; Acute Pancreatitis Werkgroep Nederland. [Probiotic prophylaxis in patients with predicted severe acute pancreatitis: a randomised, double-blind, placebo-controlled trial][Article in Dutch] <i>Ned Tijdschr Geneesk</i> . 2008 Mar 22;152(12):685-96.	Search
32.	Probiotics given as an oral swab, not ingested	Klarin B, Molin G, Jeppsson B, Larsson A. Use of the probiotic <i>Lactobacillus plantarum</i> 299 to reduce pathogenic bacteria in the oropharynx of intubated patients: a randomised controlled open pilot study. <i>Crit Care</i> . 2008 Nov 6;12(6):R136.	Search
33.	Duplicate of Kotzampassi 2006	Koutelidakis IM, Bezirtoglou E, Giamarellos-Bourboulis EJ, Grosomanidis V, Kotzampassi K. Impact of synbiotics on the intestinal flora of critically ill patients with multiple injuries. <i>Int J Antimicrob Agents</i> . 2010 Jul;36(1):90-1.	Search
34.	not ICU patients, only 15% ventilated	Plaudis H, Pupelis G, Zeiza K, Boka V. Early low volume oral synbiotic/prebiotic supplemented enteral stimulation of the gut in patients with severe acute pancreatitis: a prospective feasibility study. <i>Acta Chir Belg</i> . 2012 Mar-Apr;112(2):131-8.	Search
35.	Elective surgery pts	Rayes N, Pilarski T, Stockmann M, Bengmark S, Neuhaus P, Seehofer D. Effect of pre- and probiotics on liver regeneration after resection: a randomised, double-blind pilot study. <i>Benef Microbes</i> . 2012 Sep;3(3):237-44. doi: 10.3920/BM2012.0006. PubMed PMID: 22968413.	Previous SR
36.	Duplicate of Sanaie 2014	Ebrahimi-Mameghani M, Sanaie S, Mahmoodpoor A, Hamishehkar H. Effect of a probiotic preparation (VSL#3) in critically ill patients: A randomized, double-blind, placebo-controlled trial (Pilot Study). <i>Pak J Med Sci</i> . 2013 Apr;29(2):490-4.	Search
37.	Abstract only. Duplicate of Sanaie 2014	Ebrahimi-Mameghani M,	Search
38.	Duplicate of analysis of Sanaie 2014	Sanaie S, Ebrahimi-Mameghani M, Mahmoodpoor A, Shadvar K, Golzari SE. Effect of a Probiotic Preparation (VSL#3) on CardiovascularRisk Parameters in Critically-Ill Patients. <i>J Cardiovasc Thorac Res</i> . 2013;5(2):67-70.	Search
39.	Duplicate of Tan 2011	Tan M, Lu X, Duan J et al. [Effects of probiotics on blood glucose levels and clinical outcomes in patients with severe craniocerebral trauma]. <i>Chin Crit Care Med</i> . 2013; 25(10): 627-630.	Search

40.	Not RCT	Tahir SM, Makhdoom A, Awan S, Ali SA. Role of Probiotics in the Management of Burns Patients. <i>World Journal of Medical Sciences</i> . 2014;11(3):417-21.	Search
41.	Probiotic vs Antibiotic	Oudhuis GJ, Bergmans DC, Dormans T, et al. Probiotics versus antibiotic decontamination of the digestive tract: infection and mortality. <i>Intensive Care Med</i> . 2011;37(1):110-117. doi:10.1007/s00134-010-2002-6	Previous SR
42.	Abstract only	Malian M, Reichenbach R, Peck A, Pamukov N. Probiotic supplementation in critical care. <i>Crit Care Med</i> . (2012) 40. doi:10.1097/01.ccm.0000425300.89190.4b	Previous SR
43.	Duplicate of Tan 2011	Tan M, Lu XL, Duan JW, Peng H, Zhu JC. <i>Zhonghua Wei Zhong Bing Ji Jiu Yi Xue</i> . 2013;25(10):627-630. doi:10.3760/cma.j.issn.2095-4352.2013.10.012	Search
44.	Not RCT	Alberda C, Marcushamer S, Hewer T, Journault N, Kutsogiannis D. Feasibility of a Lactobacillus casei Drink in the Intensive Care Unit for Prevention of Antibiotic Associated Diarrhea and Clostridium difficile. <i>Nutrients</i> . 2018;10(5):539. Published 2018 Apr 26. doi:10.3390/nu10050539	Search
45.	Feasibility study of Johnstone	Cook DJ, Johnstone J, Marshall JC, et al. Probiotics: Prevention of Severe Pneumonia and Endotracheal Colonization Trial-PROSPECT: a pilot trial. <i>Trials</i> . 2016;17:377. Published 2016 Aug 2. doi:10.1186/s13063-016-1495-x	Search
46.	No outcome of interest	Hariani L, Wahyudi I, Dososaputro I. The Degree Of Secretory Immunoglobulin A In Burn Patients With Probiotic Therapy. <i>International Journal of Applied Pharmaceutics</i> . 2019 Sep 15:174-6.	Search
47.	No outcome of interest	Jahangiri S, Rahmani AR, Rakhshani MH, Tajabadi A, Tadayonfar MA (2017) The Effects of Synbiotic Supplementation on Constipation and Reducing Flatulence in Stroke Patients Admitted to the ICU. <i>J Prob Health</i> 5: 167. doi: 10.4172/2329-8901.1000167	Search
48.	No outcome of interest	Wang 2017 DOI: 10.11569/wcjd.v25.i19.1788	Search
49.	No outcome of interest	Perdanakusuma 2019. The effect of a single-strain probiotic administration in the treatment of thermal burns patients	Search
50.	Abstract only	Gomersall CD, Joynt GM, Leung P, Tan P, Bengmark S. Does routine administration of probiotics improve outcome of critically ill patients? <i>Anaesth Intensive Care</i> 2006; 34: 543	Previous SR
51.	Abstract only	Tsaousi G, Stavrou G, Aidoni Z, Fotiadis K, Kotzampass K. Probiotics for the prevention of VAP and ICU-acquired infections in multi-trauma patients: a preliminary study. <i>Crit Care</i> . 2019;23(suppl 2):72. doi:10.1186/s13054-019-2358-0	Previous SR
52.	Heat-killed probiotic	Habib T, KASSEM AB, Ahmed I. Early Probiotics In Preventing Ventilator-Associated Pneumonia After Multiple Trauma. <i>Asian J Pharm Clin Res</i> . 2020;13(10):83-5.	Search
53.	Single vs Multi-strain probiotic (no control group)	Saputro ID, Putra ON, Pebrianton H, Suharjo. Effects of probiotic administration on IGA and IL-6 level in severe burn patients: a randomized trial. <i>Ann Burns Fire Disasters</i> . 2019;32(1):70-76.	Search
54.	Systematic review, Not ICU pts	Dendukuri N, Costa V, McGregor M, Brophy JM. Probiotic therapy for the prevention and treatment of Clostridium difficile-associated diarrhea: a systematic review. <i>CMAJ</i> . 2005 Jul 19;173(2):167-70.	CCN
55.	Systematic Review of patients on	Hempel S, Newberry SJ, Maher AR, Wang Z, Miles JN, Shanman R, Johnsen B, Shekelle PG. Probiotics for the prevention and treatment of antibiotic-associated diarrhea: a systematic review and meta-analysis. <i>JAMA</i> . 2012 May 9;307(18):1959-69.	CCN

	antibiotics, not ICU patients		
56.	Systematic review - included studies are reviewed	Barraud D, Bollaert PE, Gibot S. Impact of the administration of probiotics on mortality in critically ill adult patients: a meta-analysis of randomized controlled trials. <i>Chest</i> . 2013;143(3):646-655. doi:10.1378/chest.12-1745	Search
57.	Systematic review - included studies are reviewed	Batra P, Soni KD, Mathur P. Efficacy of probiotics in the prevention of VAP in critically ill ICU patients: an updated systematic review and meta-analysis of randomized control trials. <i>J Intensive Care</i> . 2020;8:81. Published 2020 Oct 15. doi:10.1186/s40560-020-00487-8	Search
58.	Systematic review - included studies are reviewed	Bo L, Li J, Tao T, et al. Probiotics for preventing ventilator-associated pneumonia. <i>Cochrane Database Syst Rev</i> . 2014;10(10):CD009066. Published 2014 Oct 25. doi:10.1002/14651858.CD009066.pub2	Search
59.	Systematic review - included studies are reviewed	Chen C, Wang J, Yin M, Zhao Q Probiotics are effective in decreasing the incidence of ventilator-associated pneumonia in adult patients: a meta-analysis of randomized controlled trials <i>Int J Clin Exp Med</i> 2018;11(10):10269-10277	Search
60.	Systematic review - included studies are reviewed	Du T, Jing X, Song S, et al. Therapeutic Effect of Enteral Nutrition Supplemented with Probiotics in the Treatment of Severe Craniocerebral Injury: A Systematic Review and Meta-Analysis. <i>World Neurosurg</i> . 2020;139:e553-e571. doi:10.1016/j.wneu.2020.04.083	Search
61.	Systematic review - included studies are reviewed	Gou S, Yang Z, Liu T, Wu H, Wang C. Use of probiotics in the treatment of severe acute pancreatitis: a systematic review and meta-analysis of randomized controlled trials. <i>Crit Care</i> . 2014;18(2):R57. Published 2014 Mar 31. doi:10.1186/cc13809	Search
62.	Systematic review - included studies are reviewed	Gu WJ, Wei CY, Yin RX. Lack of efficacy of probiotics in preventing ventilator-associated pneumonia probiotics for ventilator-associated pneumonia: a systematic review and meta-analysis of randomized controlled trials. <i>Chest</i> . 2012;142(4):859-868. doi:10.1378/chest.12-0679	Search
63.	Systematic review - included studies are reviewed	Gu WJ, Deng T, Gong YZ, Jing R, Liu JC. The effects of probiotics in early enteral nutrition on the outcomes of trauma: a meta-analysis of randomized controlled trials. <i>JPEN J Parenter Enteral Nutr</i> . 2013;37(3):310-317. doi:10.1177/0148607112463245	Search
64.	Systematic review - included studies are reviewed	Ji T, Zhu X, Shang F, Zhang X. Preventive Effect of Probiotics on Ventilator-Associated Pneumonia: A Meta-analysis of 2428 Patients. <i>Ann Pharmacother</i> . 2021;55(8):949-962. doi:10.1177/1060028020983021	Search
65.	Systematic review - included studies are reviewed	Koretz RL. Probiotics, critical illness, and methodologic bias. <i>Nutr Clin Pract</i> . 2009;24(1):45-49. doi:10.1177/0884533608329296	Search
66.	Systematic review - included studies are reviewed	Li C, Liu L, Gao Z, et al. Synbiotic Therapy Prevents Nosocomial Infection in Critically Ill Adult Patients: A Systematic Review and Network Meta-Analysis of Randomized Controlled Trials Based on a Bayesian Framework. <i>Front Med (Lausanne)</i> . 2021;8:693188. Published 2021 Jul 15. doi:10.3389/fmed.2021.693188	Search

67.	Systematic review - included studies are reviewed	Liu KX, Zhu YG, Zhang J, et al. Probiotics' effects on the incidence of nosocomial pneumonia in critically ill patients: a systematic review and meta-analysis. <i>Crit Care</i> . 2012;16(3):R109. Published 2012 Jun 25. doi:10.1186/cc11398	Search
68.	Systematic review - included studies are reviewed	Petrof EO, Dhaliwal R, Manzanares W, Johnstone J, Cook D, Heyland DK. Probiotics in the critically ill: a systematic review of the randomized trial evidence. <i>Crit Care Med</i> . 2012;40(12):3290-3302. doi:10.1097/CCM.0b013e318260cc33	Search
69.	Systematic review - included studies are reviewed	van Ruissen MCE, Bos LD, Dickson RP, Dondorp AM, Schultsz C, Schultz MJ. Manipulation of the microbiome in critical illness-probiotics as a preventive measure against ventilator-associated pneumonia. <i>Intensive Care Med Exp</i> . 2019;7(Suppl 1):37. Published 2019 Jul 25. doi:10.1186/s40635-019-0238-1	Search
70.	Systematic review - included studies are reviewed	Seifi N, Jafarzadeh Esfahani A, Sedaghat A, et al. Effect of gut microbiota modulation on feeding tolerance of enterally fed critically ill adult patients: a systematic review. <i>Syst Rev</i> . 2021;10(1):95. Published 2021 Apr 2. doi:10.1186/s13643-021-01633-5	Search
71.	Systematic review - included studies are reviewed	Shimizu K, Hirose T, Ogura H. Efficacy of probiotics in the prevention of diarrhea in ventilated critically ill ICU patients: meta-analysis of randomized control trials. <i>J Intensive Care</i> . 2021;9:62. Published 2021 Oct 15. doi:10.1186/s40560-021-00567-3	Search
72.	Systematic review - included studies are reviewed	Siempos II, Ntaidou TK, Falagas ME. Impact of the administration of probiotics on the incidence of ventilator-associated pneumonia: a meta-analysis of randomized controlled trials. <i>Crit Care Med</i> . 2010;38(3):954-962. doi:10.1097/CCM.0b013e3181c8fe4b	Search
73.	Systematic review - included studies are reviewed	Su M, Jia Y, Li Y, Zhou D, Jia J. Probiotics for the Prevention of Ventilator-Associated Pneumonia: A Meta-Analysis of Randomized Controlled Trials. <i>Respir Care</i> . 2020;65(5):673-685. doi:10.4187/respcare.07097	Search
74.	Systematic review - included studies are reviewed	Sun S, Yang K, He X, Tian J, Ma B, Jiang L. Probiotics in patients with severe acute pancreatitis: a meta-analysis. <i>Langenbecks Arch Surg</i> . 2009;394(1):171-177. doi:10.1007/s00423-008-0379-2	Search
75.	Systematic review - included studies are reviewed	Tian X, Pi YP, Liu XL, Chen H, Chen WQ. Supplemented Use of Pre-, Pro-, and Synbiotics in Severe Acute Pancreatitis: An Updated Systematic Review and Meta-Analysis of 13 Randomized Controlled Trials. <i>Front Pharmacol</i> . 2018;9:690. Published 2018 Jun 28. doi:10.3389/fphar.2018.00690	Search
76.	Systematic review - included studies are reviewed	Wang J, Liu KX, Ariani F, Tao LL, Zhang J, Qu JM. Probiotics for preventing ventilator-associated pneumonia: a systematic review and meta-analysis of high-quality randomized controlled trials. <i>PLoS One</i> . 2013;8(12):e83934. Published 2013 Dec 18. doi:10.1371/journal.pone.0083934	Search
77.	Systematic review - included studies are reviewed	Watkinson PJ, Barber VS, Dark P, Young JD. The use of pre- pro- and synbiotics in adult intensive care unit patients: systematic review. <i>Clin Nutr</i> . 2007;26(2):182-192. doi:10.1016/j.clnu.2006.07.010	Search
78.	Systematic review - included studies are reviewed	Weng H, Li JG, Mao Z, et al. Probiotics for Preventing Ventilator-Associated Pneumonia in Mechanically Ventilated Patients: A Meta-Analysis with Trial Sequential Analysis. <i>Front Pharmacol</i> . 2017;8:717. Published 2017 Oct 9. doi:10.3389/fphar.2017.00717	Search

79.	Systematic review - included studies are reviewed	Yi LJ, Tian X, Shi B, Pi YP, Chen WQ. Early enteral nutrition supplemented with probiotics improved the clinical outcomes in severe head injury: Some promising findings from Chinese patients. <i>Medicine (Baltimore)</i> . 2019;98(17):e15426. doi:10.1097/MD.00000000000015426	Search
80.	Systematic review - included studies are reviewed	Zhang MM, Cheng JQ, Lu YR, Yi ZH, Yang P, Wu XT. Use of pre-, pro- and synbiotics in patients with acute pancreatitis: a meta-analysis. <i>World J Gastroenterol</i> . 2010;16(31):3970-3978. doi:10.3748/wjg.v16.i31.3970	Search
81.	Systematic review - included studies are reviewed	Zhao J, Li LQ, Chen CY, Zhang GS, Cui W, Tian BP. Do probiotics help prevent ventilator-associated pneumonia in critically ill patients? A systematic review with meta-analysis. <i>ERJ Open Res</i> . 2021;7(1):00302-2020. Published 2021 Jan 25. doi:10.1183/23120541.00302-2020	Search
82.	Not probiotic study	Shariatpanahi VZ, Jamshidi F, Nasrollahzadeh J, Amiri Z, Teymourian H. Effect of Honey on Diarrhea and Fecal Microbiota in Critically Ill Tube-Fed Patients: A Single Center Randomized Controlled Study. <i>Anesth Pain Med</i> . 2018;8(1):e62889. Published 2018 Feb 21. doi:10.5812/aapm.62889.	Search
83.	Abstract only	Woodcock 2000. https://doi.org/10.1046/j.1365-2168.2000.00014.xa	Search

Need to get full-text (from Previous SR)

- Wu XG, Zhang QC. Adjuvant therapy for probiotics in patients with severe acute pancreatitis with hepatic lesion: an analysis of 27 cases. *Clin Med* 2009; 29: 51-52.
- Jin X, Shi Y, Yuan B, et al. The effect of early enteral nutrition supplemented with probiotics on ventilator-associated pneumonia in patients with severe stroke. *Chin J Microcol*. 2019;31:174-178